



BAY AND PARLIAMENT STREET,Downtown



Price: \$3,207

Address: BAY AND PARLIAMENT STREET,Downtown

City: New Providence/Paradise Island

MLS#: 51533

Listing No: C-13

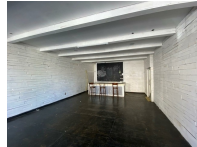
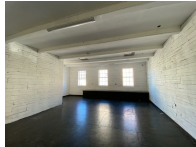
Beds: n/a

Baths: n/a

Living Area: n/a

Year Built: n/a

Status: For Rentonly



Property Details


Situated on the corner of Bay Street and Parliament Street, this multi storey property is located in the heart of Downtown Nassau, immediately west of Parliament Square. This 926 sq. ft. space is located on the upper floor with access via a stairwell from Bay Street and it is the perfect spot for your office or light retail needs. Annual Rental Rate - \$25.00 per sq. ft. Annual CAM Charge - \$16.56 per sq. ft. The monthly rental rate shown includes the monthly CAM charge of \$1,277.88. No Food Operations permitted. Contact our office for more information and to schedule a viewing today!

Agent Details



 **Nassau/New Providence Office**

 [\(242\) 362-5219](tel:(242)362-5219)

 [\(242\) 362-5219](tel:(242)362-5219)

 info@moskorealty.com



The Bahamas Real Estate Association is not responsible for the accuracy of the information listed above. The data relating to the real estate for sale or lease on this website comes in part from the Internet Data Exchange Program (IDX) and the Bahamas MLS, and is provided here for consumer's personal, non-commercial use. It may not be used for any purpose other than to identify prospective properties consumers may be interested in purchasing or leasing. Real Estate listings held in brokerage firms other than the office owning this website are marked with the IDX logo on the short inquiry. Data provided is deemed reliable but not guaranteed. This information is protected by

