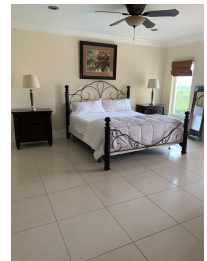
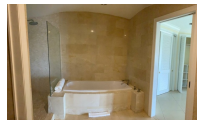


Unit 402 SUFFOLK COURT CONDOMINIUM, Bahamia



Price: \$3,000
Address: Unit 402 SUFFOLK COURT
CONDOMINIUM, Bahamia
City: Grand Bahama/Freeport
MLS#: 55187
Lot Size: 80,000 sq. ft.
Listing No: R4
Beds: 3
Baths: 3
Living Area: 2,251 sq. ft.
Year Built: n/a
Status: For Rentonly



Property Details


This Abaco model unit is located in Suffolk Court Condominiums, a luxurious upscale waterfront residence boasting 6 acres of private gated access, panoramic ocean views, tropical gardens, heated swimming pool with pool showers, hot tub, and a private marina with direct ocean access. Great location in close proximity to Xanadu Beach. Enjoy living in this contemporary European designed three bedroom turnkey unit that is impeccably furnished and complete with high quality finishing work, modern fixtures and appliances, fully equipped marble bathrooms, spacious decks and balconies, and a 60 gallon quick recovery hot water heater. This center unit features an open floor plan that maximizes breathtaking ocean views. Pets and children are allowed.

Agent Details

 **Grand Bahama Office**





 [\(242\) 351-6445](tel:(242)351-6445)

 gbinfo@moskorealty.com



The Bahamas Real Estate Association is not responsible for the accuracy of the information listed above. The data relating to the real estate for sale or lease on this website comes in part from the Internet Data Exchange Program (IDX) and the Bahamas MLS, and is provided here for consumer's personal, non-commercial use. It may not be used for any purpose other than to identify prospective properties consumers may be interested in purchasing or leasing. Real Estate listings held in brokerage firms other than the office owning this website are marked with the IDX logo on the short inquiry. Data provided is deemed reliable but not guaranteed. This information is protected by copyright and all rights reserved. This property is shown courtesy of The Bahamas MLS.

© 2017 All rights reserved

11/15/2023 03:20:03 AM